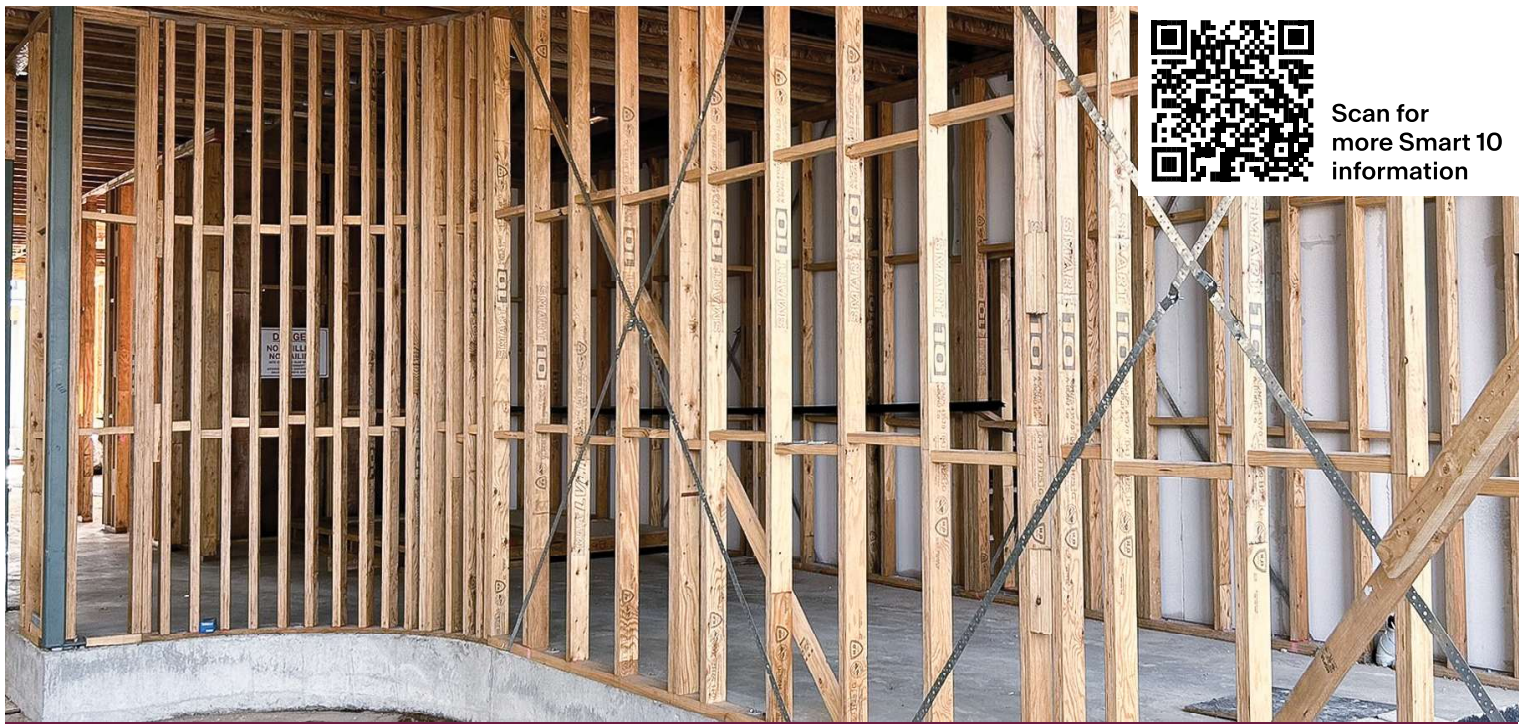




Scan for
more Smart 10
information



SMART 10

SMART10 LVL: Superior Wall Framing

Smart10 is manufactured for superior performance in all wall system applications, providing exceptionally straight and strong walls.

Smart10 is proven to:

- Significantly reduce the packing and planing of walls
- Save build time and reduce labour costs.

Smart 10 Features:

- Smart10 is available in all popular lengths
- Range of wider profiles providing superior properties and characteristics to MGP10
- Adhesive rating: A Bond
- Emissions: E₀
- H2S Treated for Termites
- JD4 Joint Strength Group.

SmartFrame Warranty

All SmartFrame Engineered Wood Products (EWP) are covered by a warranty against material and workmanship defects and are guaranteed to perform as specified when stored, installed, and finished in accordance with SmartFrame installation instructions.



Comprehensive Range

Smart10 offers a comprehensive range:

35mm Wide

70 | 90 | 120 | 140 | 170 | 190

45mm Wide

70 | 90 | 120 | 140 | 190 | 240 | 290 | 300

Refer to your relevant state sales team for available sizes and lengths.



Certified

Smart10 is a third party product certified by a JAS-ANZ accredited body as being manufactured in conformance with AS/NZS 4357 structural laminated veneer lumber.



H₂O Shield[®] Short-term Water Repellent

Smart10 comes with a clear short-term water repellency. H₂O Shield is a high penetrating water-based surface treatment formulated to repel rain during storage and construction.



Treatment Options

Smart10 products are H2S treated as standard for protection against termite attack in areas South of the Tropic of Capricorn. Post production H2 and H3 treatments are available on request.

Stress grade	Section size		Characteristic values, MPa								
	Depth mm	Breadth mm	Bending (f _b)	Tension parallel to grain (f _t)	Compression parallel to grain (f _c)	Shear in beam (f _v)	Average modulus of Elasticity parallel to the grain (E)	Bearing perpendicular to the grain (f _p)	Tension perpendicular to grain (f _{tp})	Design Density (kg/m ³)	Joint Group
Smart10 LVL ⁽²⁾⁽³⁾	70	35 and 45	36.0	25.0	28	4.2	10000	10	0.5	580	JD4
	90		36.0	25.0							
	120		34.3	25.0							
	140		33.5	25.0							
	190		31.8	24.0							
	240		3.6	23.1							
290	29.6	22.4									
MGP10	70 to 140	35 and 45	17	7.7	18	2.6	10000	10	0.5	500	JD5 ⁽¹⁾
	190		16	7.1	18	2.5					
	240		15	6.6	17	2.4					
	290		14	6.1	16	2.3					
MGP12	70 to 140	35 and 45	28	12.0	24	3.5	12000	10	0.5	540	JD4
	190		25	12.0	23	3.3					
	240		24	11.0	22	3.2					
	290		22	9.9	22	3.1					

1. If heat excluded, Joint Group is JD4.
2. For beams with a depth greater than 90 mm, f_b has been multiplied by (90/d)^{0.67} where d is the depth of the member.
3. For tension members with the larger cross sectional dimension exceeding 150 mm, f_t has been multiplied by (150/d)^{0.67} where d is the larger cross sectional dimension of the tension member.

